

TYPE 1 DIABETES

# National Screening Pilot

# Routine Screening for Childhood Type 1 Diabetes

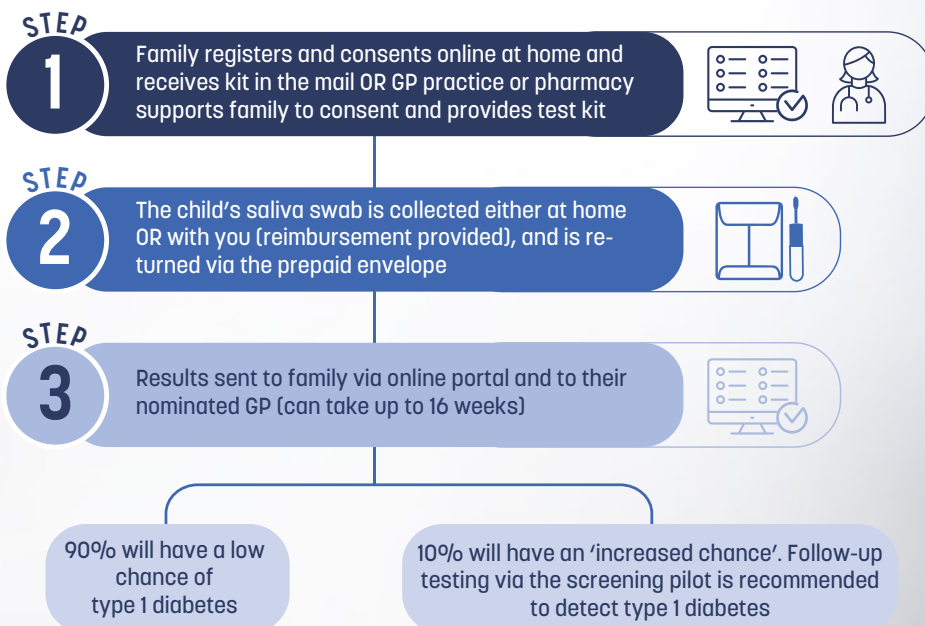
FOR GP PRACTICES AND PHARMACIES

Your support is a powerful tool to screen every child aged 6-12 months in your area for type 1 diabetes



- Every day 3 children are diagnosed with type 1 diabetes, an autoimmune condition
- 1 in 3 new cases will be diagnosed late, presenting as a medical emergency with life-threatening, Diabetic Ketoacidosis (DKA)
- Early diagnosis is difficult as 90% have no family history and first symptoms are vague e.g. thirst and tiredness
- A simple saliva swab identifies at-risk children, so they can be monitored and diagnosed before symptoms develop
- Screening and follow-up can virtually eliminate the risk of DKA and improve long-term health

## Screening is Free, Simple, Quick and Safe



Register your interest and claim your reimbursement online

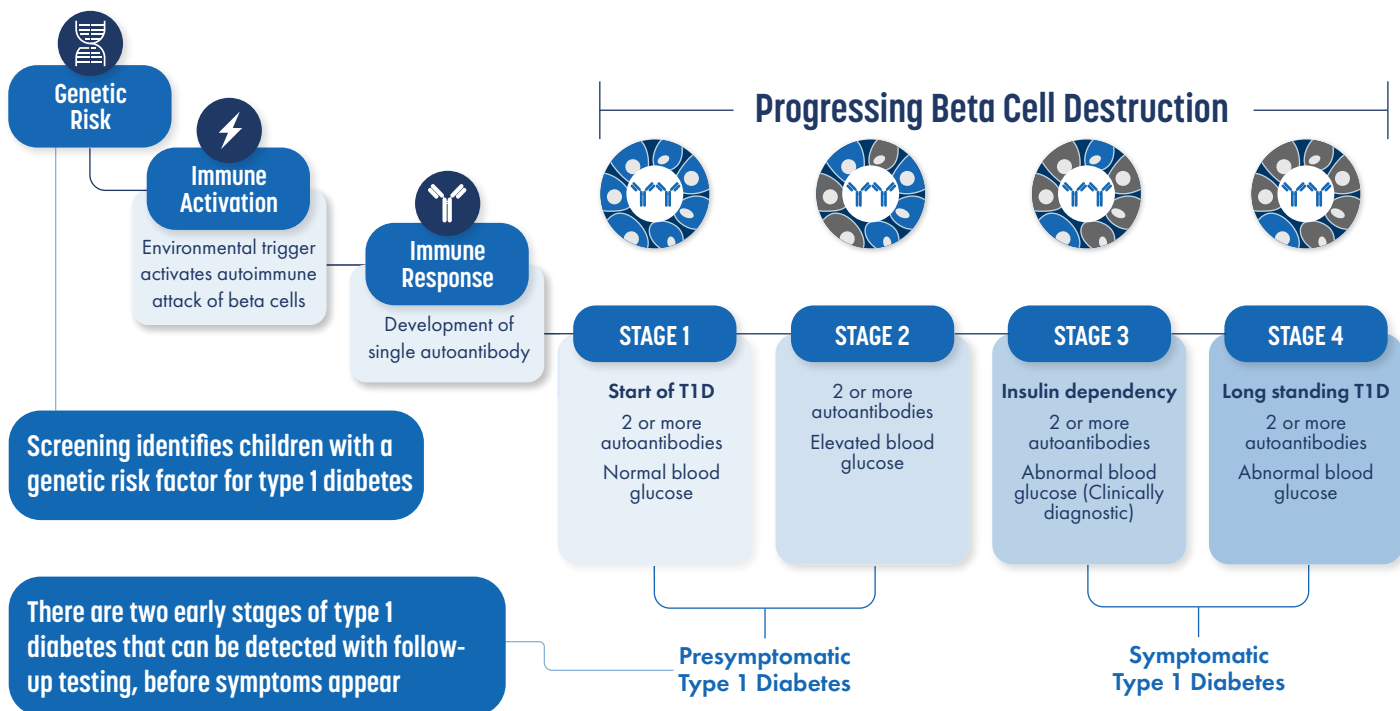
[www.KidsDiabetesScreen.com.au](http://www.KidsDiabetesScreen.com.au)

Helpline: 1800 505 909

SIMPLE TEST

**BIG OUTCOMES**  
TEST FOR TYPE 1 DIABETES

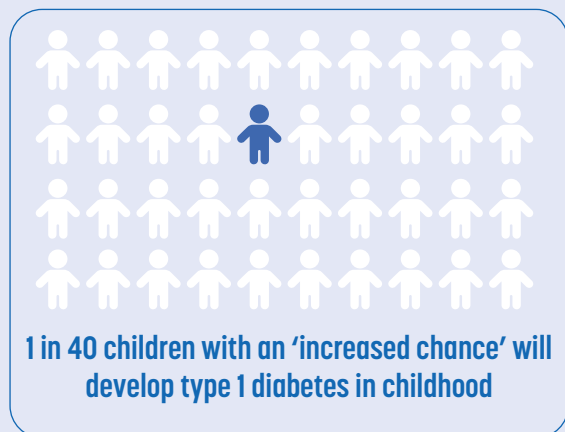
# Stages of Type 1 Diabetes



## About Childhood Type 1 Diabetes Risk

A simple saliva swab can estimate a child's genetic risk and identify those with a 'low' vs 'increased' chance of developing type 1 diabetes in childhood.

- **1 in 10 children** have an 'increased chance' of developing type 1 diabetes, based on their genetic risk score
- Of these, **1 in 40 children** will develop it in childhood
  - While the risk is still relatively low, it is much higher than the general population (1 in 300)
- Less than **1 in 1,200 children** with a 'low chance' will develop type 1 diabetes in childhood.

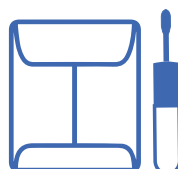


## How You Can Support Screening:



### Reassure Families:

Your reassurance and support is a powerful tool in helping families seeking advice on screening. Answer their questions and reassure them the test is simple, safe, effective and important for all children aged 6-12 months



### Collect Saliva Swabs:

You can collect saliva swabs, either assisting families with their mailed kits or by consenting and providing kits (Reimbursed \$30-50/sample).

## The Type 1 Diabetes National Screening Pilot

The Type 1 Diabetes National Screening Pilot aims to find the best way to offer a national screening program for type 1 diabetes to all children in Australia in the future.

This national 'not for profit' research pilot is led by the University of Sydney, with collaborating universities and hospitals around Australia. It is funded by JDRF, the leading supporter of type 1 diabetes research in the world.

SUPPORTED BY:

